

BOUNTIFUL & BEAUTIFUL

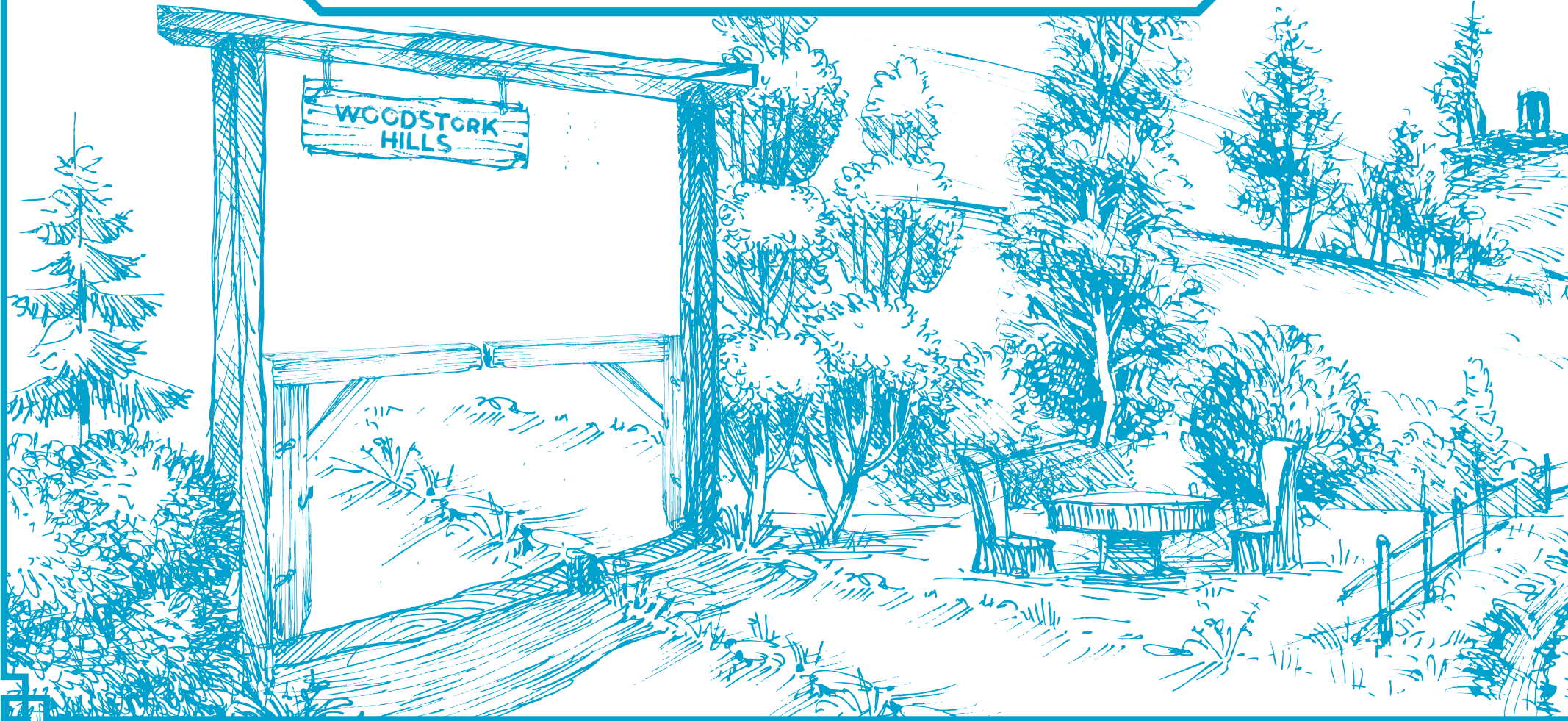
EUROPEAN STYLE MANAGED
FARMLANDS



WOODSTORK
HILLS
by Kshetra Farms

European
★ Style ★
Farmland

ENTER INTO EUROPE

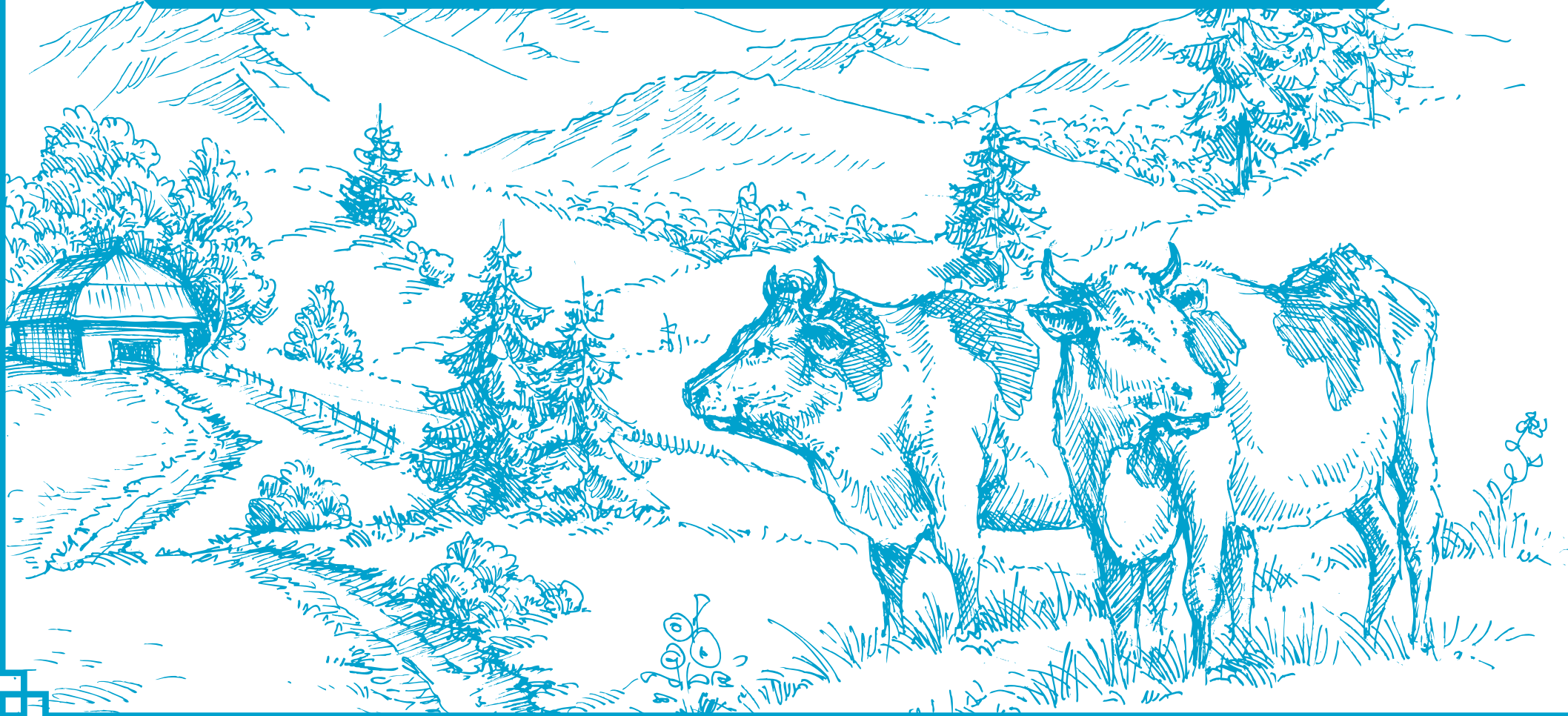


24 ACRES | 91 FARM PLOTS

Here at Woodstork, we've toiled for a long time so that you can experience the beauty of living in a farmland that is European in style. Years of hardwork and planning has finally resulted in a sprawling farmland that is lush green, filled with amenities like organic gardens and long grown plantations, evoking a rustic experience. This stretch of land is found nowhere else - close to pristine nature, while still adjacent to the airport, the highway and rising development projects. It was truly a blessing from Mother Nature herself so that we could conceive it for you.



HOME IN THE HEARTLANDS



SECOND HOMES IN A COUNTRYSIDE FARMING COMMUNITY

Within this gated community, you will get your own farm houses, while also enjoying the joy of a community life filled with fun, informative activities and extensive amenities. It is a perfect second home where even the generations that come after you will thrive. It is a great investment also for the fact that it is close to places of development, highways and the airport; is European in style; an ideal tourism hub; is a safe destination during pandemics. Two brilliant architects and their talented team have built a home for you to escape city chaos and reconnect with your roots.





PERKS OF OUR PARADISE

AMENITIES OF WOODSTORK FARMS

Over here at Woodstork farms, you'll be privy to several authentic countryside experiences by having a slew of specific amenities made to evoke that.



FESTYLAND (CHILDREN'S OUTDOOR PLAY AREA)

Get your children to come out and play in the splendid outdoors. Let them have fun playing games like badminton and volleyball, and plenty more where they enjoy themselves.

WONKA (CHILDREN'S INDOOR ACTIVITIES)

Alternatively, the children can have their fun playing exciting games indoors - where they can try many board and card games or even video games. It's always wonderful for them.





DYNAMO CORNER (OPEN GYM)

For those who want to get their muscles toned or get a good workout, there's an open gym where you can flex your gains or get more while getting rejuvenated in the fresh air.

BOOKISH BEAUTIES (LIBRARY)

All the bibliophiles looking to nurture their brains with knowledge can come over to the farm library where there is a great collection of books for one to peruse through.





WORK FROM FARM / FREE WIFI

With wifi facilities in our clubhouse, you'll find the joys of working in the midst of beautiful nature. Let the sounds of nature inspire you to be creative and productive.

NIGHTWISH POND (WATER POND)

Come by the beautiful water pond where there is a picturesque park. You will be treated to the bliss of nature and serenity so that your mind can be rejuvenated.





OLIVE GARDEN (EUROPEAN CAFETERIA)

Taste delicious beverages, desserts and more at the most quaint, European cafeteria that is home to many sights and smells that hark you back to the continent.

ORGANIC KITCHEN

A kitchen that cooks up delicious dishes that was made with exclusively organic ingredients, grown here at the farm itself, so that you can taste how Mother Earth wanted it.





CONE ALSOS (OPEN AIR THEATRE)

This is a place for you to come unwind while watching a giant screen play out the movies that you wanted to view with your loved ones and friends. It'll be spectacular.

NATURE SELFIE CORNERS

Perhaps there is nowhere more beautiful to take selfies than beside nature, and this is why there is a dedicated spot for selfie fanatics to get their fix of self-portraits.





WATER FOUNTAIN

Come and converge near the water fountain, a marvellous sight for the sore eyes, with bouts of water springing forth and spreading all around, it's a beautiful thing to behold.

HILL VIEW POINT

A perfect viewpoint on the hill that gives those who come here a great vantage point to witness the splendour of the farms and the lands nearby that will inspire awe.



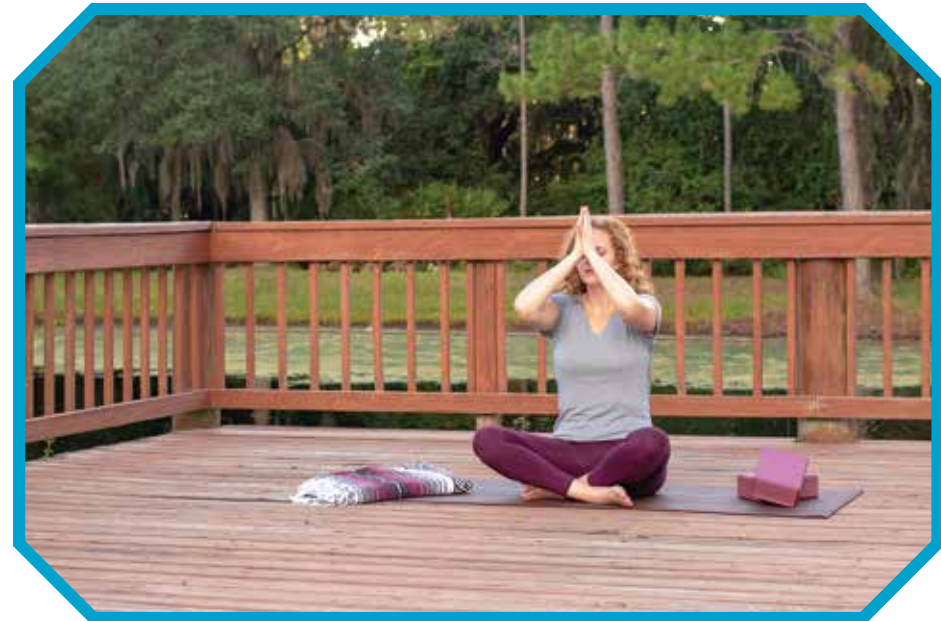


BEL AIR (HILL DINING)

At this hill, you can have your friends, family and all loved ones come to dine on a picturesque spot atop a hill with a delightful ambience that will elevate the moment.

TRANQUIL HEIGHT (HILL YOGA DECK)

A hilltop is an ideal place for one to meditate and spend their leisure immersed in the ancient art of Yoga. With the pristine views and healing air, this will give your mind and body bliss.





HEALTHY SNACK BAR

This bar is designed to give you an array of treats and snacks that, unlike their cousins, are designed to get you healthier and more vitalised for the rest of the day.

HEALTHY JUICE BAR

This is where you can get the best juices to replenish your fluids after a good exercise or just because you want to. Feel your body glow with energy and goodness once you drink them.





STAY AT THE BLUE BELLAGIO (MODEL HOUSE STAY)

Stay in a house that can be called the epitome of European rustic style. The place creates a pastoral ambience while being convenient - come stay and make memories.

DOCTOR ON CALL

Never fret when someone is having a medical emergency, we have in our team, doctors who are on call to come and treat effectively, whatever ailment anyone is having.





EMERGENCY MEDICAL KITS

If there is anything that you are lacking in terms of medical supplies, you can procure an emergency medical kit that will be having all of the things you need.

GLAMPING

For those seeking a more opulent stay while in the midst of nature, there can be provided a glamping set up that will ensure you are in luxury while still surrounded by nature.





CAMP LIZA (FIREPLACE)

Camping by the fireplace is a most life-affirming thing, surrounded by your friends and loved ones, relaxing and feeling the warmth of the flame, it's a hypnotising experience.

ROSEMARY (MEDICINAL & HERBAL GARDEN)

This garden is an array of the most sacred and medicinal plants from across the land, grown so that they may be used in a holistic treatment of the body and mind.





CONVENIENCE STORE

For all your thrift and supply needs, you can get them at the convenience store which has a vast inventory of items that you will need and want during your stay here.

DUCK FARM

Here is housed many flocks of ducks that are there for farming needs. They are healthy and safe, and you can come around any time to see them or for any other reason.





ZOO BERLIN (PETTING ZOO)

In this petting zoo, you will see many varieties of cute animals who are there for you to come over and give them affection. You are welcome to interact with them throughout the day.

BANCO DELS (GARDEN BENCHES)

These welcoming seats situated in the midst of gardens are your invitation to take a break and relax while soaking in the picturesque views while breathing the fresh air.





MONET'S GARDEN (FLOWER GARDEN)

Blooming in all shapes and colours, this vivid tapestry of flowers is a sight to behold. Stretching for quite a bit, be dazzled by the spectrum of flora that enchants you.

PATHWAYS

Winding into the farm like a mystical path, this pathway is flanked in all its sides by beautiful flora that evokes the most enchanting ambience to mesmerise you.





ORGANIC VEGETABLE GARDEN

Witness the flourishing growth of your 8 X 12 ft organic vegetable garden, yielding safer versions of vegetables that's purer in taste and supremely healthy.

BELLISSIMO (CLUB HOUSE)

Here is where you can get together with all the others in the vicinity and socialise; get to know one another while resting and enjoying the time in easy leisure.





FUN IN THE FARMLANDS

ORGANISED RECREATIONAL AND LEARNING ACTIVITIES

There is a spectrum of fun things to do for recreation here at Woodstork, and each of them is a delight in itself. You will just have to find the list, do the ones that resonate with you the most, or perhaps, if you are keen, do all of them. There will be no shortage of exciting moments here at this pristine land, and you will be feeling loftier after each time.



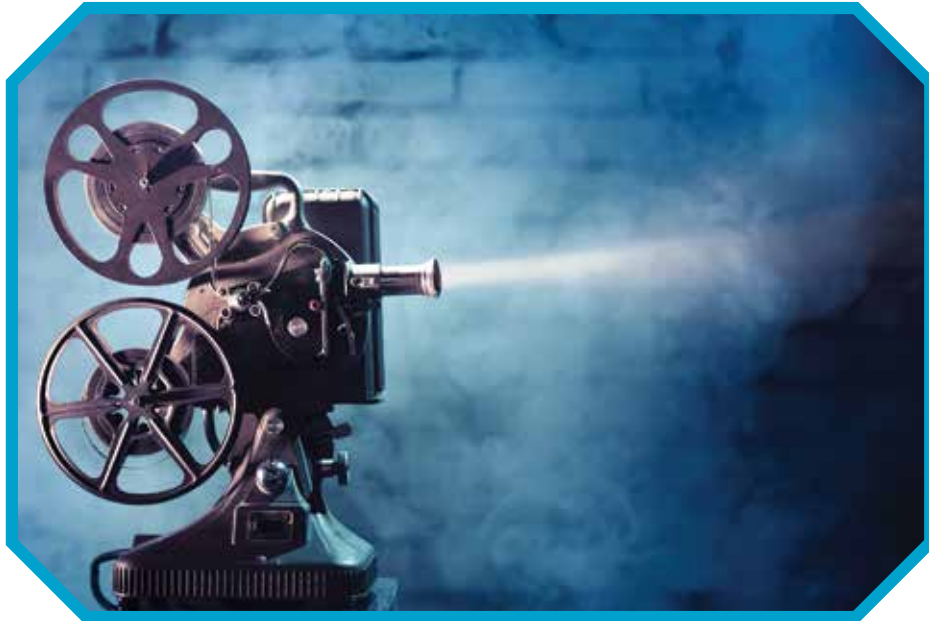
BIRD WATCHING

Now how can someone say no to the chance to watch the vast and vivid plumages of our avian friends who descend here? Come out with your friends and watch their magnificence.

LOCAL PUPPET SHOW

This is a different and singular experience, this is something that you would hardly find in the cities, this is authentic folk art, and it is a form of art, many rarely see.





MOVIE SCREENING

If you are still missing the theatres and the excitement of watching the movies on screen, then there are regular movie screenings that happen to get you immersed again.

HILL STAR GAZING

If it's a moment that you won't ever forget is what you're looking for, then this is where you will find it. Gaze upon the sea of diamonds in the sky and just be in sublime awe.





FARMING WORKSHOP

If you're confused about how to get into farming, you will be able to find more knowledge and resources if you attend this workshop that is fun and informative.

PLANTATION BY KIDS

Have all the kids gather as one and let them learn from a tender age how to plant the seeds and saplings that will grow into important flora and crops.





VILLAGE TOURISM

There are several villages in the vicinity of Woodstork farms, and each of them is unique. On this tour, you will see how the villages still co-exist in harmony with nature.

OPEN JEEP TOUR

This is an exciting premise, and it is even more exciting when done. You can tour the whole farm and more on a jeep, watching the rolling lands in all their beauty.





COMMUNITY COOKING

This community experience is something that will last with you forever because food is the great unifier. You can try out new recipes, share the methods, and have a blast.

MUSICAL CAMPFIRE

A musical campfire out in the open is the quintessential camping experience of the outdoors, and we have set it up in a perfect spot so that lots of you can gather and sing songs.





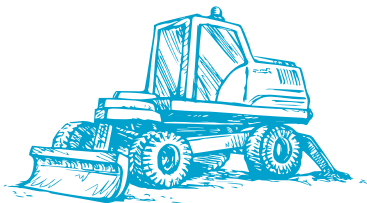
FACILITATING THE FARM

INFRASTRUCTURE INDEX OF THE LAND

This farm is a place that is full of state of the art infrastructure facilities from roads, irrigation, electricity and more. Proper execution of such an ambitious project required meticulous thinking on the part of everyone involved. The farm had to be a seamless experience, and with more than an adequate organisation, it has become so.



Individual boundary of each plot along with separate gate for each plot.



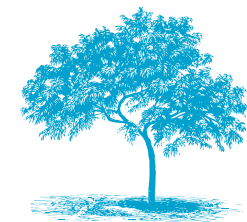
Land Leveling
& Cleaning



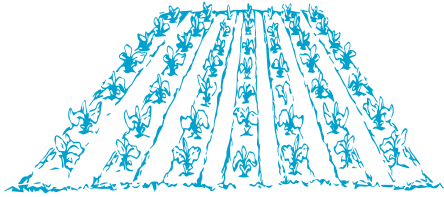
Ornamental
Plantation



Fruit Plantation



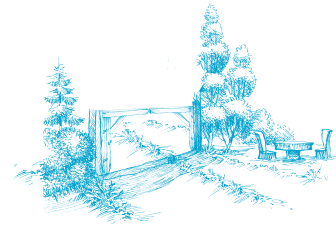
Shaded Tree
Plantation



Organic Vegetable Bed



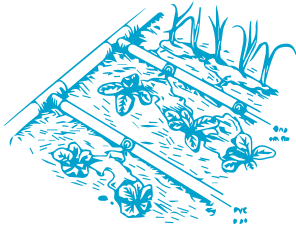
Flower Plantation



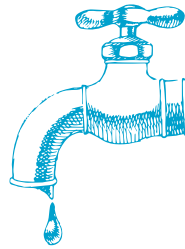
European Gate to Each Farm



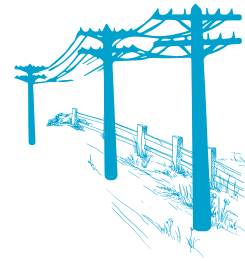
Rustic Fencing with Creepers



Drip Irrigation



Water Connection



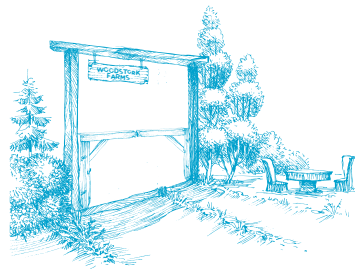
Electricity Connection



Internal Roads



Street Lights



Gated Community



Nursery



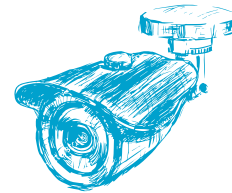
Plantation Assistance



Farmhouse Sourcing



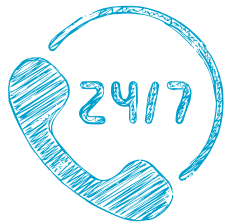
Rental/Managed
Services for Farmhouses



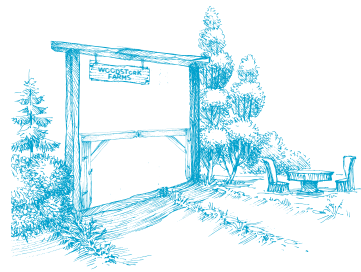
CCTV Surveillance



24 x 7 Security



24 x 7 Call Centre



European Entry Arch



Borewell



PERCHED AT THE PERFECT SPOT

PROXIMITY TO A HIGH GROWTH CORRIDOR

This is a fertile land, considering the rich soil, beautiful scenes, and water supply; but it is also fertile from many different points of view. The farm is located close to the Bengaluru International Airport, barely a 45 minutes drive away. State of the art institutions are being developed here such as the likes of massive MNCs and IT companies, apart from the large PSUs. The proximity to NH 7 will bring further developments along the corridor. The presence of these institutions will attract job seekers to come and settle nearby, thus increasing the value of the land. The increment is guaranteed and investing on a large patch of farmland is sure to bear ripe fruits.



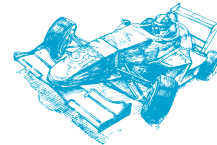
Bangalore Airport



Corporate Cluster in
Palasamudram Junction



RAXA Training
Academy



Formula 3
Racing Track



Concept City



APIIC's 2000 Acre
Corporate Zones



Special
Economic Zones



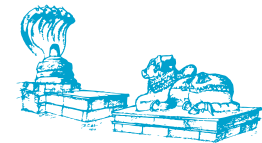
Hyunet EV Mfg.
Facility



Veerapuram
Bird Sanctuary

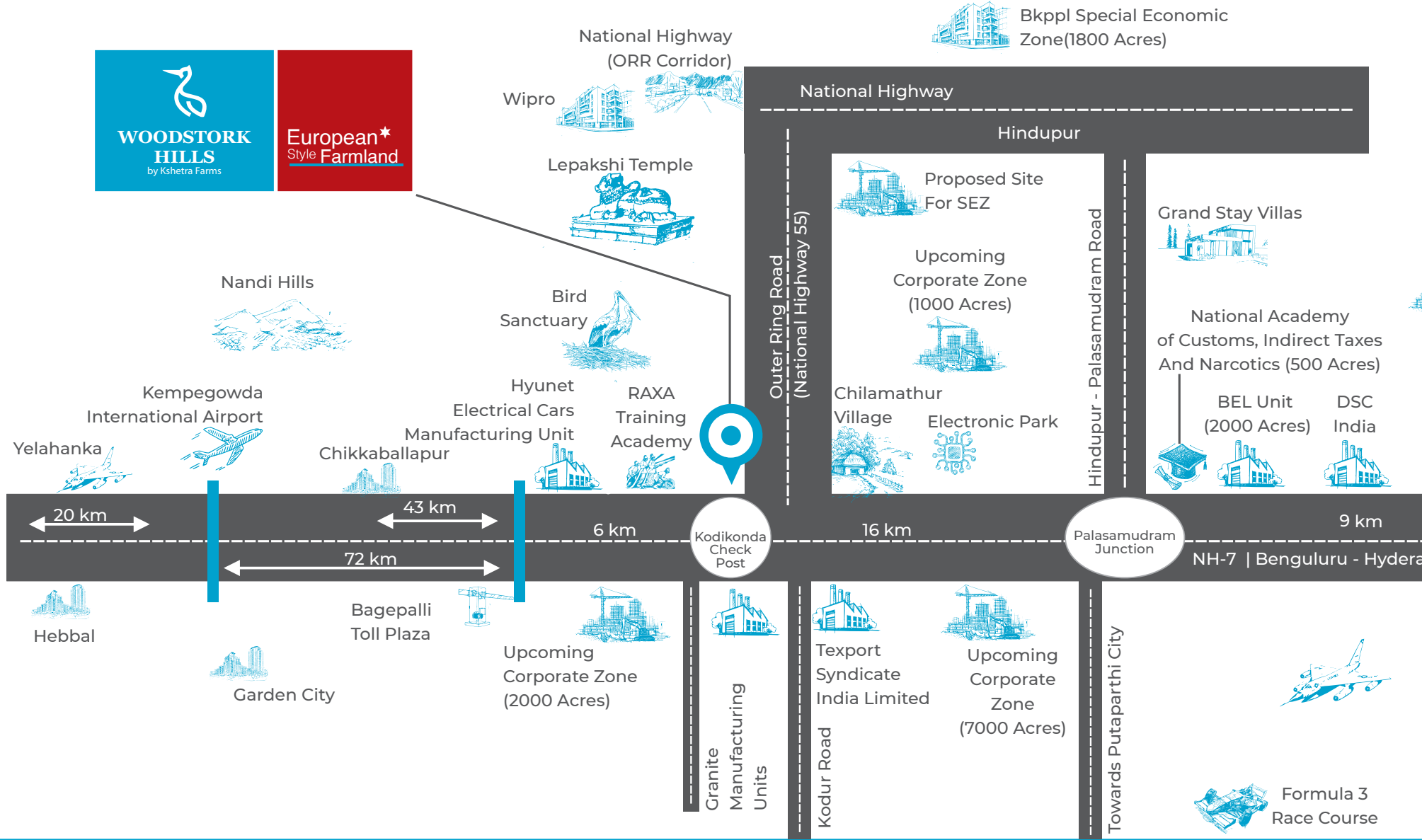


Texport
Syndicate Ltd



Lepakshi
Temple

LOCATION PROXIMITIES





Upcoming corporates announced and setting up in the zone

Bogok India	JRG Automotives Industries India
Daechang Seat Automotive	KSH Automotive
Faurecia Interior Systems India	Seoyon E-Hwa Automotive
Hyundai Materials India	Sungwoo Hitech AP
Hwaseung IA Automotives	UE Press Tools
ING Auto Components	United Plastic Industries



Upcoming Corporates
Announced And Setting
Up In The Zone



Proposed Textile
Zone(5000 Acres)



INZI SL AP India Pvt. Ltd.

Wooyoung Automotive
India Pvt. Ltd.

Daeha Plastic
Compound
India Pvt. Ltd.

Penukonda



Andhra Pradesh Highway

AP-ADE Park
Site For Andhra Pradesh Aerospace
& Defence And Electronics Park
(AP-ADE) (5000 Acres)

Upcoming Corporates
Announced And Setting
Up In The Zone



KIA
Motors Plant
(1200 Acres)

ACCESSIBILITY

NH 55	1 min
NH 44	2 mins
Kodikonda X Roads	4 mins
Bagepalli Toll Plaza	8 mins
Corporate Zone	8 mins
Automobile Zone	12 mins
Chikkaballapur	20 mins
Kempegowda International Airport	45 mins
Esteem Mall, Hebbal	70 mins



WHAT'S IN THE VICINITY

NEARBY DEVELOPMENTS IN THE WORKS

There are various stages of major developments which the bordering area is witnessing currently. AP Government is approving several prestigious projects such as Concept City, knowledge based industries and entertainment centres in the location. The Government has acquired more than 30000 acres to allot to the corporates who have shown their interest to set up their base in this region.

FIRST CONCEPT CITY AT ANANTAPUR IN 2500 ACRES

To be set up at **TEKULODU** near Bangalore

1,000 ACRES to be developed in first phase

Jacobs Masterplan under designing by the **JACOB CONSULTANCY**

Later to be established in **TIRUPATI AND VIZAG**

These three concept cities to be developed in a complete **ECO-FRIENDLY MANNER**

APIIC
The Future is Here

CONCEPT CITY

The AP Government has conceptualized concept cities on the lines of smart cities being developed by the Centre under Smart Cities Mission. With all modern civic amenities, futuristic public infrastructure, and technology-enabled administration, the concept city will be built with an aim to provide its residents with 'walk to work' facilities. An entire new city will be built in a land area of 2,000 acres; a vast piece of vacant land in Chilamathur- Gorantla mandals near Kodikonda checkpoint has been identified for the project and a detailed survey is in progress, as per APIIC. This proposed development would be at a stone's throw distance from Woodstork Hills.

HYUNET PRIVATE LIMITED (EV MANUFACTURING UNIT)

Karnataka Industrial Areas Development Board (KIDB) has cleared proposals worth Rs. 1,825 crores by Hyunet Private Limited on 300 acres to be allotted in Bagepalli Taluk of Chikballapur District for Lithium Batteries and Electric Vehicles manufacturing. The project is expected to generate 2,210 jobs and is at a distance of about 10 Km. from Woodstork Hills.

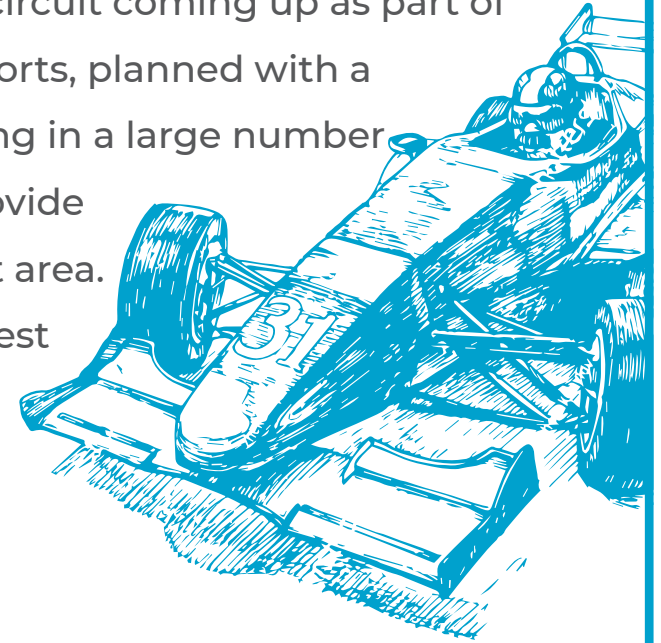
2000 ACRE CORPORATE ZONES (NH 44)

Andhra Pradesh Industrial Infrastructure Corporation (APIIC) has acquired a land and earmarked it for upcoming corporate zones of about 1000 acres; each at two designated areas within a distance of 3 to 5 kms., from Woodstork Hills. This proposed development would be at a stone's throw distance from Woodstork Hills.



FORMULA 3 RACING TRACK

A Formula Three (F3) racing track is under works at Kotapalli of Tankallu mandal in Andhra Pradesh's Anantapur district. FIA recognition sought for the 3.4-km circuit coming up as part of a 219-acre resort under development in Anantapur. The 100 crore resorts, planned with a wellness centre and a golf course in 50 acres, is committed to bringing in a large number of tourists. The second phase will also be developed and will help provide employment opportunities for 150 to 200 people in the entire project area. The racing track will also be used by automobile manufacturers for test purposes. Although the F3 circuit racing car has a speed of 250 kms, it has struts and high-speed corners at a height of 40 meters.



SPECIAL ECONOMIC ZONES

The location is proposed to witness several SEZ developments sanctioned under Lepakshi Knowledge Hub and also independent SEZ proposals such as:

- ◆ SEZ under Biotechnology category
- ◆ SEZ under Aerospace & Precision Engineering category
- ◆ SEZ under Free Trade and Warehousing Zone (FTWZ)
- ◆ WIPRO SEZ

All these developments are within 3 km radius from Woodstork Hills.

CORPORATE CLUSTER IN PALASAMUDRAM JUNCTION

About 16 km from the Kodikonda X roads, an upcoming corporate cluster is poised to take the entire corridor to a giant development in the near future. The upcoming corporates / institutions are:

- ◆ National Academy of Customs, Indirect Taxes and Narcotics (500 Acres)
- ◆ Bharat Electronics Limited (BEL) Unit (2000 Acres)
- ◆ DSC India
- ◆ INZI
- ◆ SL AP India P Ltd
- ◆ Andhra Pradesh Aerospace & Defence And Electronics (AP- ADE) Park (5000 Acres)
- ◆ Wooyoung Automotive India Private Limited
- ◆ DAEHA Plastic Compound India Private Limited
- ◆ Bogok India
- ◆ United Plastic Industries
- ◆ Faurecia Interior System India
- ◆ Sungwoo Hitech AP
- ◆ Hwaseung IA Automotives
- ◆ UE Press Tools
- ◆ Daechang Seat Automotice
- ◆ ING Auto Components
- ◆ JRG Automotives Industries India
- ◆ KSH Automotive Hyundai Materials India
- ◆ Seoyon E-Hwa Automotive



RAXA TRAINING ACADEMY

RAXA Academy was established in 2007 and is located on NH 44 about 950 meters from Kodikonda X Roads and about 3.5 Kms from Woodstork Hills. RAXA Academy is a GMR group initiative for full-fledged techno security solutions for safety and security to industrial and business establishments. RAXA has set up its training academy spread across in 100 acres amidst sprawling meadows. The academy has a highly reputed board of members such as HJ Dora, MR Reddy and SIS Ahmed.



TEXPORT SYNDICATE (INDIA) LTD.

Texport India Limited is a garment exporter having its unit near Kodikonda Checkpost within 3 kms. distance from Woodstork Hills. The facility has opportunity for many skilled and unskilled workers finding decent employment.

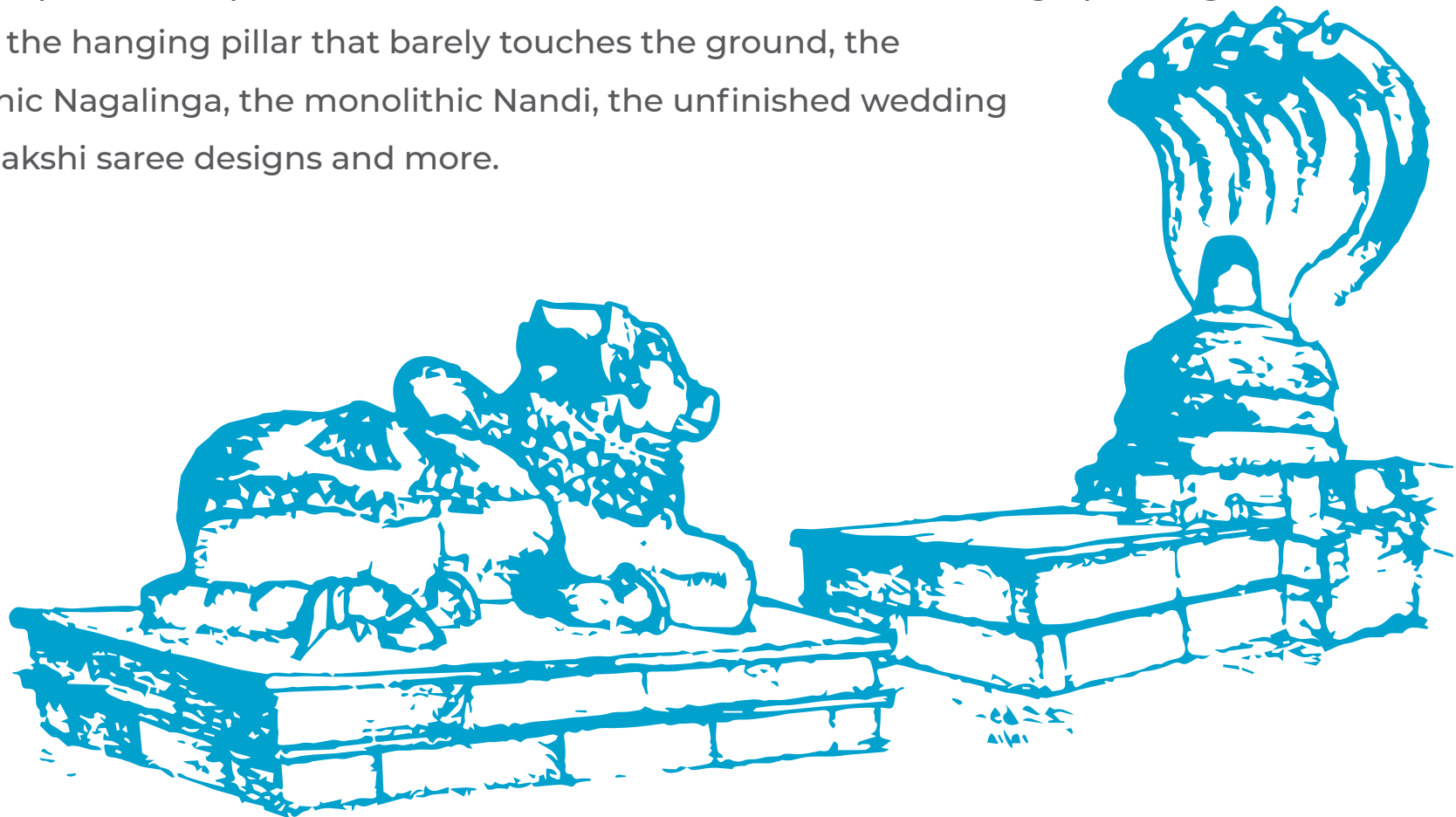
VEERAPURAM BIRD SANCTUARY

Veerapuram bird sanctuary is about 9.5 Kms from Woodstork Hills. The sanctuary is spread around 188 acres of a huge pond surrounded by good vegetation of trees. "Painted Stork" birds migrate every year from Siberia (Russia) to Veerapuram. This heronry is quite large with more than 1,000 birds.



LEPAKSHI TEMPLE

Lepakshi Veerabhadra Swamy Temple is located at a distance of 12.5 km. from Woodstork Hills. The temple was built way back in 1538 by Vijaynagara dynasty. The legendary Lepakshi is famous for its about 470 years old Veerabhadra Swamy temple complex with beautiful Vijayanagar styled sculptures, 100-pillared dance hall, beautiful and intricate carvings, paintings on the ceilings, the hanging pillar that barely touches the ground, the monolithic Nagalinga, the monolithic Nandi, the unfinished wedding hall, Lepakshi saree designs and more.



AREA IN NEWS

CONCEPT CITY

WALK TO WORK FACILITIES IN ANANTAPUR

EMT Government.com
Your exclusive e-Governance Source



SMART & SAVVY DEVELOPMENT HUB
ON THE RISE

Anantapur is now going to compete with better developed regions or even all modern smart cities, thanks to the state government's decision to establish a Concept City on Bengaluru-Hyderabad highway. Anantapur has a huge potential for development of industry with its strategic location between Bengaluru-Chennai and Bengaluru-Hyderabad routes and availability of vast tracts of vacant land.

KIA

1ST INDIAN PLANT IN ANANTAPUR

DECCAN Chronicle

Thursday, Jan 21, 2021 | Last Update : 01:06 PM IST



KIA HAS BIG PLANS FOR ANANTAPUR

KIA Motors, the world's eighth largest automaker, with its first ever plant in India located in Andhra Pradesh at Erramanchi in Anantapur district, succeeded in producing cars within a short period. The 536-acre barren lands of Erramanchi in Penukonda mandal on National Highway 44 close to the Bengaluru International Airport was shaped into a 'Korean City' in two years.

HYUNET

TO GENERATE 13,341 JOBS

Outlook

THE NEWS SCROLL

21 DECEMBER 2020 Last Updated at 8:08 PM | SOURCE: PTI

Karnataka clears investment proposals worth Rs 26,659 crore



and potential to generate 13,341 jobs Bengaluru, Dec 21 (PTI) The State High Level Clearance Committee (SHLCC) meeting chaired by Karnataka Chief Minister B S Yediyurappa on Monday cleared five projects with an total investment potential of Rs 26,659 crore and can generate employment to 13,341 people.

Investments cleared in the 55th SHLCC meeting include two proposals by Elion Pvt Ltd in Hubli/Dharwad - one worth Rs 14,255 crore on 85 acres of land for electric vehicle manufacturing, with a potential to generate employment for 867 people.

The other is worth Rs 6,339 crore on 58 acres for lithium ion cells and battery manufacturing unit, that can generate 1,804 jobs.

Also cleared are proposals worth Rs 1,825 crore by Hyunet Private Ltd on 300 acres to be allotted by Karnataka Industrial Areas Development Board in Bagepalli taluk of Chikkaballapur district for Lithium batteries and electric vehicles, that can produce 2,210 jobs.

Investment of Rs 1,290 crore by Miraculum Green Power Pvt Ltd on 700 acres to be taken on lease at villages in Jagalur Taluk of Davangere district to set up 110 MW hybrid wind solar power project, with a potential to generate 2,820 jobs.

Proposal worth Rs 2,950 crore by Samli Power Pvt Ltd on 1,710 acres also taken on lease at villages in Jagalur Taluk of Davangere district to set up hybrid wind solar power project, that can create jobs to 5,640 people.

The SHLCC meet was attended by Large and Medium Industries Minister Jagdish Shettar, Deputy Chief Minister Ashwat Narayan, Gaurav Gupta, Principal Secretary - Commerce and Industries department and other senior officials.

KARNATAKA CLEARS INVESTMENT PROPOSALS WORTH RS 26,659 CRORE AND POTENTIAL TO GENERATE 13,341 JOBS IN BENGALURU

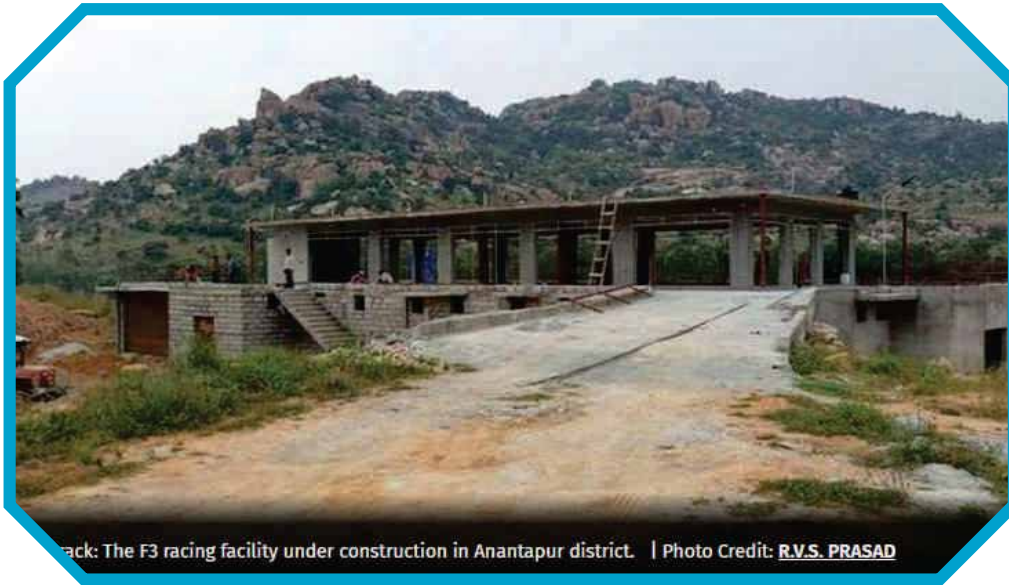
Karnataka clears investment proposals worth Rs 26,659 crore and potential to generate 13,341 jobs. Also cleared are proposals worth Rs 1,825 crore by Hyunet Private Ltd on 300 acres to be allotted by Karnataka Industrial Areas Development Board in Bagepalli taluk of Chikkaballapur district for Lithium Batteries and Electric Vehicles, that can produce 2,210 jobs.

FORMULA 3

INDIA'S KEY ATTRACTION NOW IN ANANTAPUR

THE  **HINDU**

ANANTAPUR, NOVEMBER 16, 2020 01:09 IST
UPDATED: NOVEMBER 15, 2020 22:49 IST



Track: The F3 racing facility under construction in Anantapur district. | Photo Credit: [R.V.S. PRASAD](#)

INDIA'S KEY ATTRACTION NOW
IN ANANTAPUR

A Formula Three (F3) racing track is getting ready at Kotapalli of Tankallu mandal in Andhra Pradesh's Anantapur district. The 3.4-km track will be one of the country's key attractions, similar to the Buddh International Circuit, India's only Formula One (F1) circuit located at Greater Noida in Uttar Pradesh, and the 3.74-km track located at Irungattukottai near Chennai.

NATIONAL ACADEMY

HASTENING THE EMPLOYMENT OPPORTUNITIES

Business Standard

Work begins on National Academy of Customs in Andhra

IANS Hyderabad | Last Updated at April 11, 2015 23:02 IST

Work begins on National Academy of Customs in Andhra

IANS | Hyderabad
Last Updated at April 11, 2015 23:02 IST



Follow us on [Google News](#)   

ALSO READ

Centre committed to development of Andhra: Jaitley

Agri Minister briefs Jaitley about damages to rabi crops

Centre to release Rs 7,000 crore to Andhra Pradesh

Union Finance Minister Arun Jaitley on Saturday laid foundation stone for the prestigious National Academy of Customs, Excise and Narcotics (NACEN) in Andhra Pradesh's Anantapur district.

The academy is coming up at a cost of Rs.600 crore on 500 acres of land at Palasamudram in Gorantla mandal of Anantapur district.

Jaitley said the academy would create employment opportunities in the district and hasten the process of

WORK BEGINS ON NATIONAL ACADEMY OF CUSTOMS IN ANDHRA

The academy is coming up at a cost of Rs.600 crore on 500 acres of land at Palasamudram in Gorantla mandal of Anantapur district. Jaitley said the academy would create employment opportunities in the district and hasten the process of development in backward Rayalaseema region.

BEL

LARGEST DEFENCE FACILITY IN ANDHRA PRADESH

THE HANS INDIA

BEL defence project to be completed within 3 years

The Hans India
20 Jan 2019 5:30 AM IST

f t c l g +

HIGHLIGHTS

Besides the Rs 13,000 crore Kia Motors, the district has got a prestigious Defence project to be executed by Bharath Electronics Limited


भारत इलेक्ट्रॉनिक्स
BHARAT ELECTRONICS

KL University
Live & Interactive Lectures

BEL DEFENCE PROJECT TO BE COMPLETED WITHIN 3 YEARS

BEL, a Central Government public sector project costing Rs.750 crores was announced in the sprawling 1,200 acres at Palasamudram mandal in Penukonda region during the Congress rule. The project is now becoming a reality. Once it is commissioned, the Defence Systems Integration Complex at Palasamudram, in Anantapur district of Andhra Pradesh will be the largest such facility in the country covering an area of over 900 acres.

BIRD SANCTUARY

CENTURY OLD VISITORS

THE
HANS**INDIA**

22 March 2018 5:28 AM IST



VEERAPURAM-WINGED VISITORS' DESTINATION

Nearly 2,000 painted storks, especially from Siberia in Russia, visit Veerapuram village in Chilamattur mandal, an age-old bird habitat, every year in March beginning for over a century. As the birds have already started arriving to their annual habitat, the forest department had built water trenches and fish feed supply points for these migratory birds.

AIRBUS

THE WORLD'S LEADING COMMERCIAL AIRCRAFT IN ANANTAPUR

THE HINDU

ANANTAPUR, JANUARY 03, 2015 00:25 IST
UPDATED: NOVEMBER 03, 2016 01:01 IST

Airbus, one of the world's leading commercial aircraft manufacturers, it is reliably learnt, is looking to set up shop in Anantapur district of Andhra Pradesh.

Speaking to *The Hindu*, the Anantapur Collector, Solomon Arogyaraj, said that the officials of Airbus had indeed approached the State government which had offered them 250 acres of land near Palasamudram village of the Gorantla mandal.

The site is on the Hyderabad- Bengaluru National Highway, 80 km from Anantapur town and about 90 km from the Bengaluru.

The stretch of land, entirely belonging to the government, was in line with the requirements of Airbus, as it was close to the Bengaluru International Airport, providing unhindered and fast access to it, he said.

AIRBUS TO SET UP SHOP IN ANANTAPUR

Airbus, one of the world's leading commercial aircraft manufacturers, it is reliably learnt, is looking to set up shop in Anantapur district of Andhra Pradesh. Speaking to *The Hindu*, the Anantapur Collector, Solomon Arogyaraj, said that the officials of Airbus had indeed approached the State government which had offered them 250 acres of land near Palasamudram village of the Gorantla mandal.

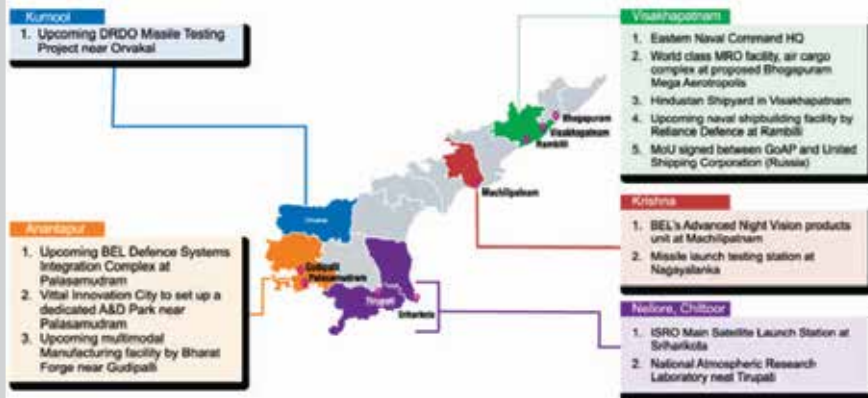
AEROSPACE

THE EMERGING HUB OF AEROSPACE AND DEFENCE



Aero India 2017

Existing and Upcoming Aerospace and Defence Projects



ANDHRA PRADESH: THE EMERGING HUB OF AEROSPACE AND DEFENCE

The new state of Andhra Pradesh is fast evolving into a preferred destination for global businesses in India. Andhra Pradesh, at 10.99%, clocked India's highest GSDP growth rate in the Financial Year 2016 FY16. The state is expected to consistently grow in double digits, 300-400 basis points ahead of India's average GDP growth rate.

LEPAKSHI

A GLOBAL TOURISM DESTINATION

THE
HANS  **INDIA**

8 March 2020 1:20 AM IST

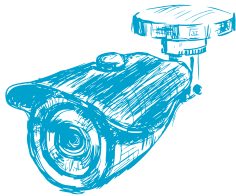


LEPAKSHI TO BE DEVELOPED AS
GLOBAL TOURIST DESTINATION

Department of Tourism Managing
Director Praveen Kumar has stated that
his department will do the needful to
popularise Lepakshi as a world tourist
destination. He said that the district has
vast potential for tourism development.

WHY TAKE WOODSTORK

ADVANTAGES OF THE FARM



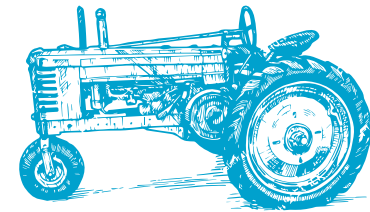
MAINTENANCE AND SURVEILLANCE

We help your piece of land be completely secure with round the clock surveillance and efficiently maintain the state of the farm.



IDEAL FARMLAND

When we chose our farmland, we have done so that they are in the midst of nature, providing a recluse from the city and a place to unwind.



CERTAIN GROWTH

With state of the art infrastructure, farming accessories and sustainable techniques, the yields here would be bountiful.

AMENITIES

MARVAKOTHAPALLI VILLAGE



ZOO BERLIN
(PETTING ZOO)



DYNAMO CORNER
(OPEN GYM)

STREETS OF WOODSTORK HILLS

- LA RAMBLA
- GLORIETA
- RUA NOVA
- FLAVIA
- SAN SEBASTIAN
- VIA TOLEDO
- ZOSIA
- CANDELA



BELLISSIMO

NIGHTWISH POND
(WATER POND)

OLIVE GARDEN
(EUROPEAN CAFETERIA)

CONE ALSOS
(OPEN AIR THEATRE)

MONET'S GARDEN
(FLOWER GARDEN)

MAGIA TAMARINDO
(FRUIT PLANTATION)

FESTYLAND
(CHILDREN'S OUTDOOR PLAY AREA)

CAMP LIZA
(FIREPLACE)

BELLISSIMO
(CLUB HOUSE)

TRANQUIL HEIGHT
(HILL YOGA DECK)

BEL AIR
(HILL DINING)

VALANTINA HILL
(HILL VIEW POINT)

LINGUEE TAMARINDO

ENJOY THE
EARTH'S RICHES





A community like Woodstork Hills exists to give you an experience that you would not otherwise get. It's the result of a vision that envisaged an idyllic land for those who were craving to return to nature. We've invested all our sweat and blood into this project in the hope that you can grow sweet fruits and enjoy it.

BRAINS BEHIND THE BUSINESS

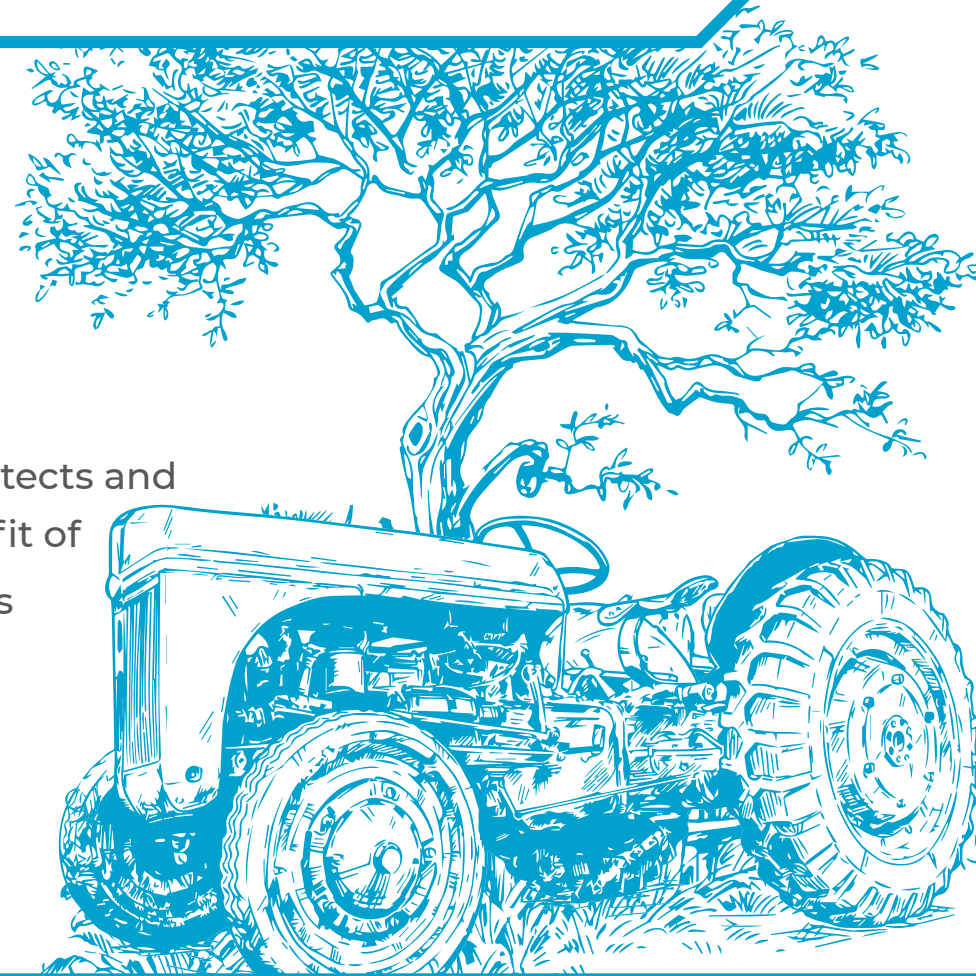


KSHETRA FARMS
You own, We manage

Kshetra Farms was founded by a team of farmers, architects and finance professionals with a view to combine the benefit of

- ◆ Knowledge of agriculture and cultivation of farmers
- ◆ Skill of layout and landscaping of architects
- ◆ Knowledge of investment and value appreciation

The team of professionals has rich experience of being associated with many successful ventures in the past.



PURPOSE

We are also committed to provide unique top-of-the-class farmlands surrounded by glorious green environs with chosen plants and thus create the best weekend destination for the farmland owners. We provide safe and secure ownership to the farmland owners by implementing the standard operating procedures of farmland management and proper maintenance.

VISION

Our vision is to develop the finest farmlands serving varied interests of families and offer the best returns through value creation and best management practices.

MISSION

To help people unwind and bond with nature with our unique farmland offerings.

CORE VALUES

- ◆ Focus on farmland developments and executional excellence
- ◆ Passionate to continuously innovate and improve
- ◆ Protect the integrity towards customers in all our business practices



KSHETRA FARMS
You own, We manage

Bengaluru:

No.6, 1st D Main, Ganganagar Extension Bengaluru - 560032

Hyderabad:

3rd Level, "Akasam", 10-1-17/1/1, Masab Tank Hyderabad - 500004

